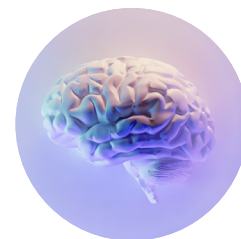


Annual PASE Geriatric Mental Health Conference Agenda

Wednesday, April 29, 2026



TIME	TOPIC	SPEAKER
8:30 a.m. to 8:45 a.m.	Welcome and introductions	Dr. Carole Lazaro, MD, FRCPC <i>Head of Division Geriatric Psychiatry Peterborough Regional Health Centre</i>
8:45 a.m. to 9:45 a.m.	Supporting the Sexual Health of People Living with Dementia in Long-Term Care: Building Confidence Through E-Learning	Dr. Birgit Pianosi, PhD, CPG <i>Associate Professor Laurentian University</i>
9:45 a.m. to 10:05 a.m.	REFRESHMENT BREAK	
10:05 a.m. to 11:05 a.m.	Concurrent Conundrums: An approach to Concurrent Depression and Alcohol Use Disorder	Dr. Marlon Danilewitz, MD, FRCPC, CISAM <i>Associate Medical Director of General Psychiatry Ontario Shores Centre for Mental Health Sciences</i>
11:05 a.m. to 12:05 p.m.	Describing Psychosis Across the Lifespan	Dr. Mark Lachmann, MD, MHSc., FCFP, FRCPC <i>Vice-President, Medical Affairs Geriatric Psychiatry Mount Sinai Hospital, Joseph & Wolf Lebovic Health Complex</i>
12:05 p.m. to 1:25 p.m.	LUNCH BREAK	
1:25 p.m. to 2:25 p.m.	"Inappropriate" Behavior in Dementia: Pharmacological Interventions	Dr. Amer Burhan, MBChB, MSc, FRCPC <i>(Psychiatry and Geriatric Psychiatry) Physician-in-Chief, Ontario Shores Centre of Mental Health Sciences Endowed Chair for Applied Mental Health Research at Ontario Shores</i>
2:25 p.m. to 2:45 p.m.	REFRESHMENT BREAK	
2:45 p.m. to 3:45 p.m.	Managing Psychosis Across the Lifespan	Dr. Mark Lachmann, MD, MHSc., FCFP, FRCPC <i>Vice-President, Medical Affairs Geriatric Psychiatry Mount Sinai Hospital, Joseph & Wolf Lebovic Health Complex</i>
3:45 p.m. to 4:00 p.m.	Wrap-Up	Christina Doughty <i>Clinical Manager, Senior's Health and Transitional Care, Peterborough Regional Health Centre</i>