



PRHC INFORMATION SYSTEMS

Remote Access Guide for Epic (all environments) – Full Desktop

Audience: All PRHC Staff requiring Epic Access Remotely

Change Log

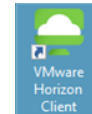
Version	Date	Change
1.0	Oct 4, 2021	Remote access Hyperspace instructions for remote clinics.
1.1	Oct 22, 2021	Updated instructions to include mandatory MFA requirements.
1.2	Nov 8, 2021	Update to include training and production environments

How to connect to VDI to Access Epic?

These instructions will help you access the Epic training and production environments while external to the hospital.

Install the VMWare Horizon Client

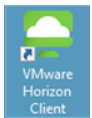
The VMWare Horizon Client is installed on your remote machine. This client is used to access the virtual desktop infrastructure (VDI) at PRHC.



If you have already installed VMWare, you will see this icon on your desktop.

Double click and skip to [step 3](#)

Step 1



Download VMWare Horizon Client. Click [here](#) to download the latest version. If you are running Windows at home, select “VMWare Horizon Client for Windows”

Product	Release Date	
VMware Horizon Client for Windows		
VMware Horizon Client for Windows	2020-03-30	Go to Downloads
VMware Horizon Client for Windows 10 UWP		
VMware Horizon Client for Windows 10 UWP from the Microsoft store	2019-09-17	Go to Downloads
VMware Horizon Client for Mac		
VMware Horizon Client for macOS	2020-03-26	Go to Downloads
VMware Horizon Client for Linux		
VMware Horizon Client for 32-bit Linux	2020-04-09	Go to Downloads
VMware Horizon Client for 64-bit Linux	2020-04-09	Go to Downloads
VMware Horizon Client for Linux tarball version	2020-04-09	Go to Downloads

Step 2

Click download.

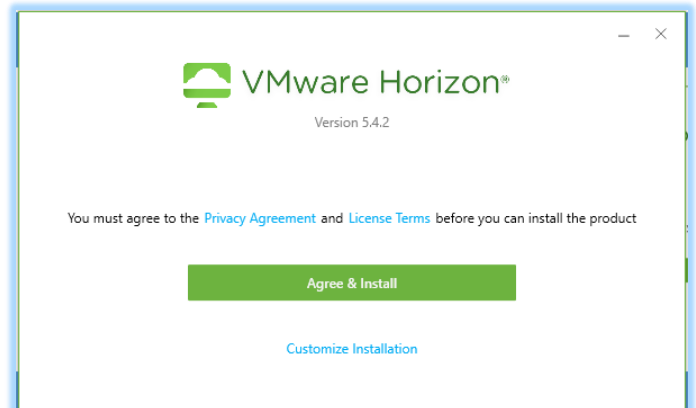
Product/Details

VMware Horizon Client for Windows
File size: 219.96 MB
File type: exe
[Read More](#)

[Download](#)

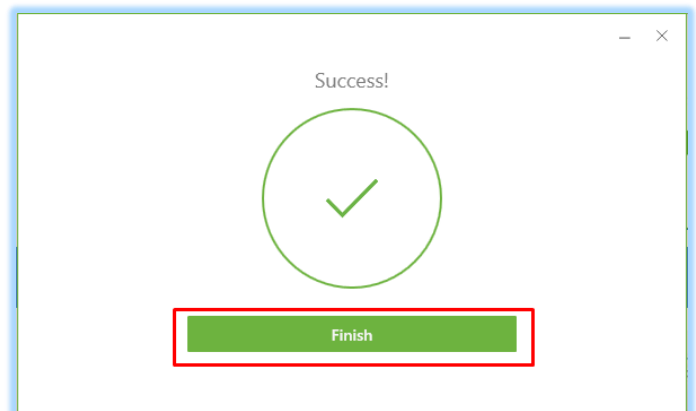
Step 3

After the download completes, launch the installer, and then select **Agree & Install**



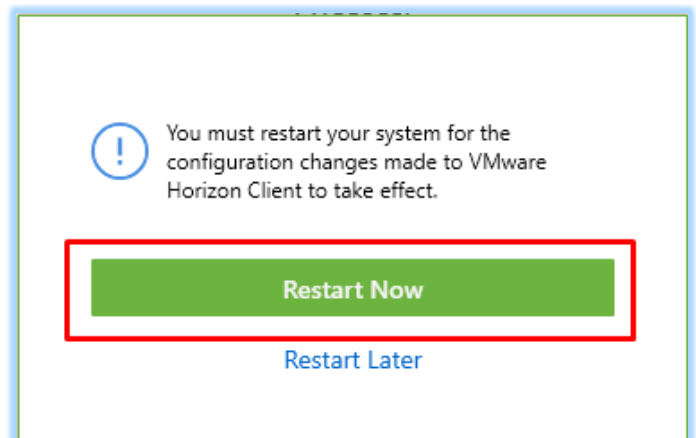
Step 4

Click **Finish**



Step 5

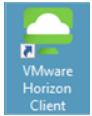
Click **Restart Now**



Configuring the VMWare Horizon Client

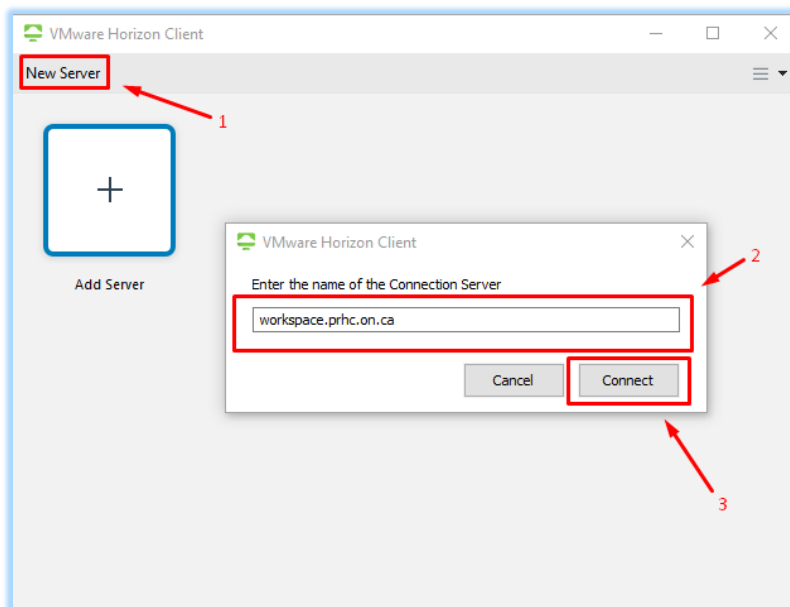
The VMWare Horizon Client is used to access the virtual desktop infrastructure at PRHC.

Step 1



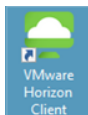
Double click the VMWare Horizon Client desktop icon to launch the VMware Horizon Client.

1. Click **New Server**
2. Enter **workspace.prhc.on.ca**
3. Click **Connect**



You now have successfully installed the VMware Horizon Client.

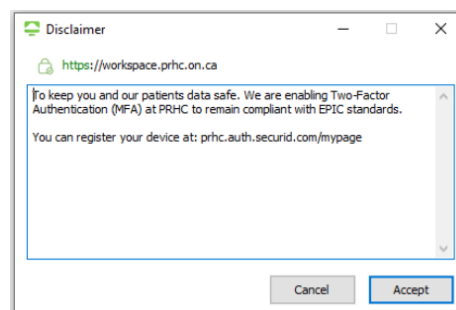
This icon will now be on your desktop.



Click this icon everytime you want to access Epic remotely.

Step 2

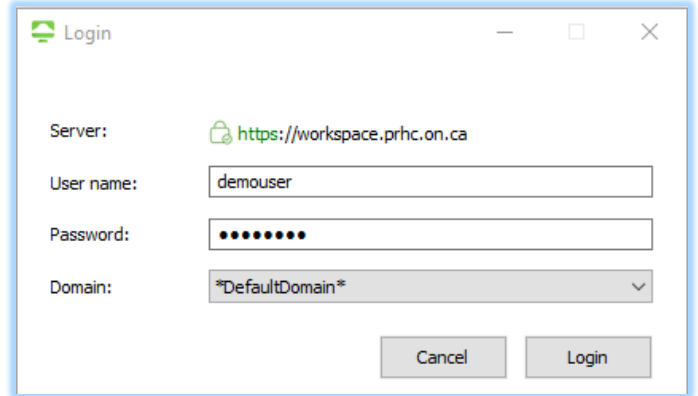
Multi Factor Authentication (MFA) is required to access the PRHC environment. This is mandatory and required in order remain compliant. If you have not already onboarded your account, please visit <https://prhc.auth.securid.com/mypage> to register your account.



Additional information can be found on the prhc.on.ca website under [Staff Resources](#).

Step 3

Enter your Active Directory Username and **password**. This is the login ID that was provided by the PRHC ServiceDesk.

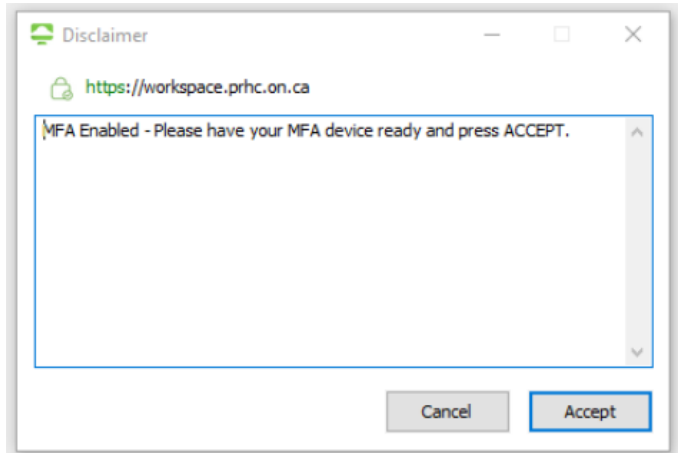


Step 4

Select **Accept** to trigger the MFA validation using the RSA Authenticate mobile application.

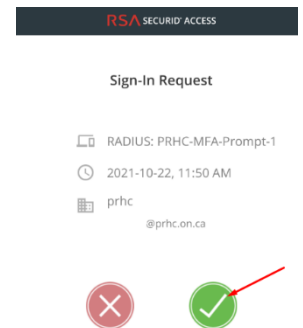
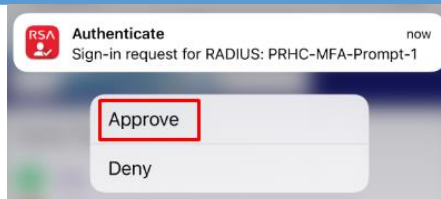
****** NOTE ******

You will only be prompted for MFA after **Nov 8, 2021**.



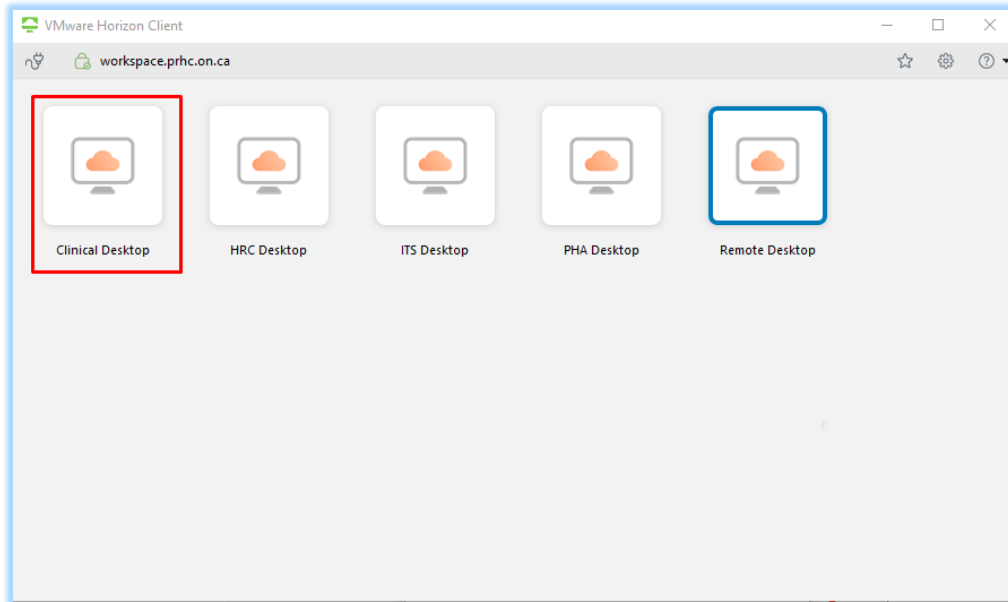
Step 5

From your mobile device (iPhone / Android) select **Approve** when prompted from either the push notification or by opening the **RSA Authenticate** app.



Step 6

Double click the desktop you have been granted access. This is most likely the “Clinical Desktop”. There may be multiple desktops that you have been granted access to.



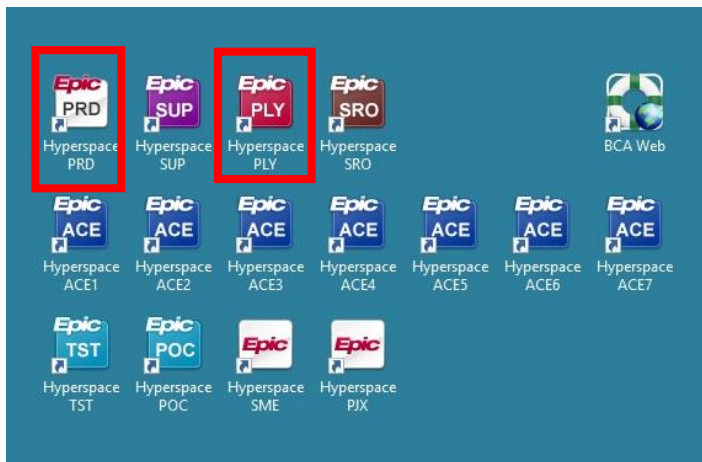
Step 7

Double click the Epic Environment you would like to access.

Reminder:

- PRD is the Production Environment
- PLY is the playground and test environment. Do not use PHI in this environment.

NOTE: You will only see the environment shortcuts that you have been granted access.



Disconnecting from the Virtual Desktop

When you are ready to disconnect from the Virtual Desktop. Select Options “Disconnect’ or “Disconnect and Log Off”.

Disconnect – Your session stays active and application remain open and active for 12 hours.

Intended Purpose: You are heading for a break or lunch.

Disconnect and Log Off – Your session is immediate closed, and all application are closed.

Intended purpose: You are finished for the day.

