

Remember

Take advantage of technology to connect with your family member virtually. Ask the healthcare team about our virtual visiting program to help you stay connected to your loved one.

News and Updates

For the latest news, updates, information and resources related to COVID-19, visit our website at: <https://www.prhc.on.ca/about-us/covid-19-novel-coronavirus/>

Questions or concerns?

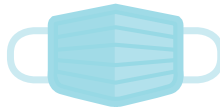
Contact a member of the healthcare team at 705-743-2121 or contact Patient Relations at patientr@prhc.on.ca

Caregivers & Visitors

Visitors must wear a mask at all times in public and patient areas of the hospital, including patient rooms.

If you will not or cannot wear a mask, you may not enter the hospital or visit a hospital patient.

If you remove your mask, you will be asked to leave.



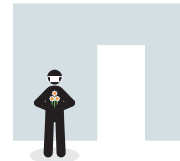
A medical mask is required at **all times**



Face shields **do not** replace the use of a mask



Sanitize your hands **before entering or leaving** the patient's room



Stay in the patient's room when you visit

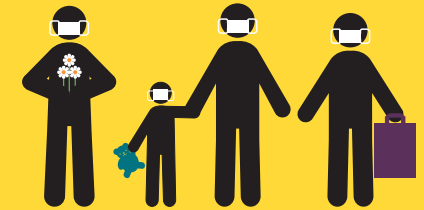


Keep a distance of **two metres** from others



Do not eat or drink while visiting

**Visiting restrictions vary in some areas of the hospital or for certain patient groups; please speak with the care team for more information.*



Family presence/visitor restrictions

OCTOBER 2021

PRHC
Peterborough Regional
Health Centre

Guided by you · Doing it right · Depend on us
www.prhc.on.ca



In March 2020, in alignment with provincial direction, Peterborough Regional Health Centre (PRHC) implemented temporary changes to our family presence/visiting policy to reduce the spread of illness and keep our patients, visitors and healthcare workers safe during the COVID-19 pandemic.

To support continued family presence for hospital patients, PRHC has slightly eased our temporary visiting restrictions effective Monday, October 18, 2021.

KEY CHANGES:

The odd-day/even-day restriction for general inpatients will be removed to allow daily visiting for this patient population.

Visiting hours for general inpatients will be extended by two hours (12:00 p.m. to 8:00 p.m.)

The following requirements will remain in effect:

- A limited number of designated essential caregivers/visitors will be permitted for each patient.
- Each caregiver must be registered on the hospital's list; other visitors will not be permitted during the patient's hospital stay.
- Patients who are known or suspected to be positive for COVID-19 are not permitted an essential caregiver/visitor, unless otherwise specified by the care team. This means that you may have to wait for a negative test result to visit.

- Visiting hours for inpatients on general inpatient units will be 12:00 p.m. to 8:00 p.m. daily unless otherwise specified.

Essential caregivers/family members

In the hospital setting, an essential caregiver or care partner is a person who provides support to an individual with limited capacity, an urgent medical condition, age-related issues, disability or chronic health concerns. Caregivers may be family, friends or neighbours, and there is no age requirement to provide care. Young caregivers, adult children, spouses and peers can all provide support. These individuals are considered essential when their presence is deemed beneficial to the assessment, diagnosis, and physical and/or mental health care of the patient.

As a patient's condition changes and/or they move to a different location, the number and frequency of essential caregivers/family members allowed may increase or decrease.

To register essential caregivers/visitors:

The inpatient (or their substitute decision maker) will be asked by their care team who their two (2) designated visitor/essential caregivers will be during their hospital stay. The patient's care team/unit will add the designated visitors/caregivers to the hospital's visitor list, and in-person visits will be scheduled in partnership with the patient/family and according to the policy.

Please speak to the care team/unit if you would like to schedule virtual visits. We are committed to supporting our patients in maintaining a connection with their loved ones.

What to know when visiting PRHC

- Check in with your name and verify your phone number when you enter PRHC in case this information is required for contact tracing purposes.
- Check out at the nursing station and at the main entrance information desk when you leave.
- Pass the screening assessment every time you enter the hospital.
- Clean your hands with hand sanitizer at the entrance and frequently during your visit.
- Wear a hospital-provided mask that covers your mouth and nose at all times in all areas of the hospital.
- Use public washrooms (not patient washrooms).
- Maintain two (2) metres of distance between yourself and the patient at all times and ensure the patient wears a mask during your visit.
- Not eat or drink in patient rooms or in public areas/hallways in the hospital.

Visitors who do not follow these practices to keep everyone safe will be asked to leave.

Thank you in advance for your support, understanding and patience.