

## After your visit

- Let the nursing station know when you are leaving
- Clean your hands
- Exit directly - limit your movement within PRHC
- All visitors are required to check out at the main entrance information desk before leaving the hospital

Please follow PRHC's policies and procedures as requested by staff, volunteers and healthcare professionals. **Failure to follow these guidelines will result in denial of a visit or you will be asked to leave the hospital.**

## Remember

Take advantage of technology to connect with your family member virtually. Ask the healthcare team about our virtual visiting program to help you stay connected to your loved one.

## News and Updates

For the latest news, updates, information and resources related to COVID-19, visit our website at: <https://www.prhc.on.ca/about-us/covid-19-novel-coronavirus/>

## Questions or concerns?

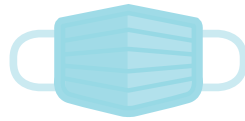
Contact a member of the healthcare team at 705-743-2121 or contact Patient Relations at [patientr@prhc.on.ca](mailto:patientr@prhc.on.ca)

# Caregivers & Visitors

**Visitors must wear a mask at all times in public and patient areas of the hospital, including patient rooms.**

**If you will not or cannot wear a mask, you may not enter the hospital or visit a hospital patient.**

**If you remove your mask, you will be asked to leave.**



**A medical mask is required at all times**



**Face shields do not replace the use of a mask**



**Sanitize your hands before entering or leaving the patient's room**



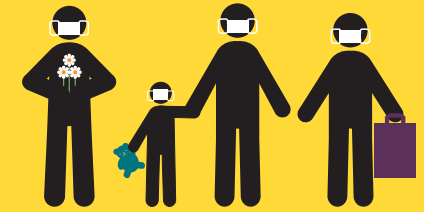
**Stay in the patient's room when you visit**



**Keep a distance of two metres from others**



**Do not eat or drink while visiting**



# Family presence/visitor restrictions

JUNE 2021

**PRHC**  
Peterborough Regional  
Health Centre

Guided by you · Doing it right · Depend on us  
[www.prhc.on.ca](http://www.prhc.on.ca)



In March 2020, in alignment with provincial direction, Peterborough Regional Health Centre (PRHC) implemented temporary changes to our family presence/visiting policy to reduce the spread of illness and keep our patients, visitors and healthcare workers safe during the COVID-19 pandemic.

With a decrease in COVID-19 cases across our community and in the hospital, effective Wednesday, June 16, PRHC will be moving to a less restrictive phase of our temporary visiting policy.

### **KEY CHANGES:**

- PRHC is returning to alternate day/alternate unit visits for patients currently permitted once-per-week visits
- PRHC is returning the ability for designated essential caregivers to switch out during the same day in Critical Care

Before you visit the hospital, please visit [www.prhc.on.ca/about-us/covid-19-novel-coronavirus/](http://www.prhc.on.ca/about-us/covid-19-novel-coronavirus/) for specific visitor details.

## **Essential Caregivers/Family Members**

**Please note: As of Tuesday, January 26, 2021, all essential caregivers must be designated. Each caregiver will be registered; other visitors will not be permitted during the patient's hospital stay.**

In the hospital setting, an essential caregiver or care partner is a person who provides support to an individual with limited capacity, an urgent medical condition, age-related issues, disability or chronic health concerns. Caregivers may

be family, friends or neighbours, and there is no age requirement to provide care. Young caregivers, adult children, spouses and peers can all provide support. These individuals are considered essential when their presence is deemed beneficial to the assessment, diagnosis, and physical and/or mental health care of the patient.

As a patient's condition changes and/or they move to a different location, the number and frequency of essential caregivers/family members allowed may increase or decrease.

## **What to know when visiting PRHC**

### **When you arrive at the main entrance**

- You will be asked by screeners to remove your non-medical mask and replace it with a medical mask before entering the building. The hospital will provide you with a medical-grade mask.
- Clean your hands using the hand sanitizer provided
- Do not bring or wear your own gloves when you visit – you will be asked to remove these when you enter the hospital
- Listen to screening questions carefully and answer them honestly to assess your risk of COVID-19
- Wear the visitor badge provided for the duration of your visit
- Arrive on the appropriate day and at the appropriate time – do not arrive before 2:00 p.m. or leave after 8:00 p.m. if you are visiting a patient during the designated hours.

## **During your visit**

- Keep your mask on for the duration of the visit - including in patient rooms
- Go to the clinical area you are visiting directly, check in at the nursing station
- Stay in the patient space/room during your visit
- Respect physical distancing (2 metres) in elevators, washrooms and other public areas
- You may purchase items at Tim Hortons or the Gift Shop but cannot stay in any of these areas
- Do not eat or drink while visiting
- Follow special precautions - if the person you are visiting is on "isolation precautions," talk to the nurse before entering the room to find out what steps you will have to take
- Designated essential caregivers are permitted for patients who are suspected or positive for COVID-19 only in the following patient populations:
  - Emergency Department patients
  - Pediatric and CAPU patients (under 18 years of age)
  - Labour & Delivery patients
  - NICU patients
  - Patients at end-of-life
  - Critical care patients
- All other inpatients who have been tested for COVID-19 must wait for a negative test result before visiting can resume.
- Don't contribute to the clutter - limit the patient's personal items
- Family members/caregivers are to use public washrooms while at the Health Centre. Please do not use the washrooms in patient rooms.