

BREAST PUMP CLEANING INSTRUCTIONS

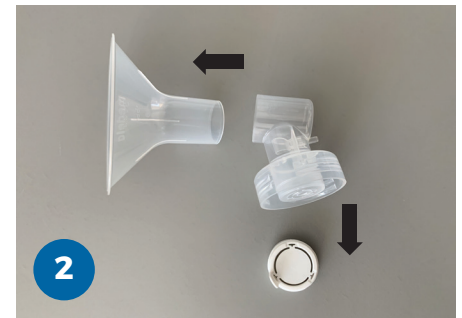
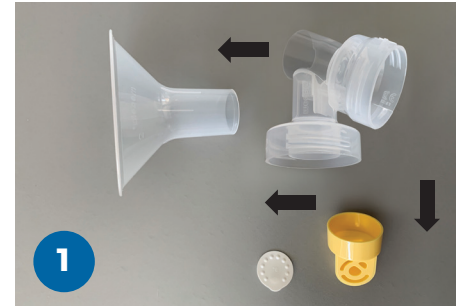
Step 1:

Separate and wash all parts that come in contact with breast and breast milk immediately after use to avoid dried breast milk residue and prevent growth of bacteria

NOTE:

- Wash breast pump kit parts after each use.
- Take care not to damage parts of the kit during cleaning.
- It is not necessary to wash tubing, membrane, cap or protective membrane prior to first use.

- 1 Long-term stay pump kit
- 2 Short-term stay pump kit



Step 2:

Using the provided basin, rinse all separated parts that came into contact with your breast and breast milk in cool water in order to remove breast milk residue.



BREAST PUMP CLEANING INSTRUCTIONS

Step 3:

Soak all separated parts in warm, soapy water for 5 minutes.

Wash each part with a clean cloth or soft brush.

Rinse all separated parts with water.



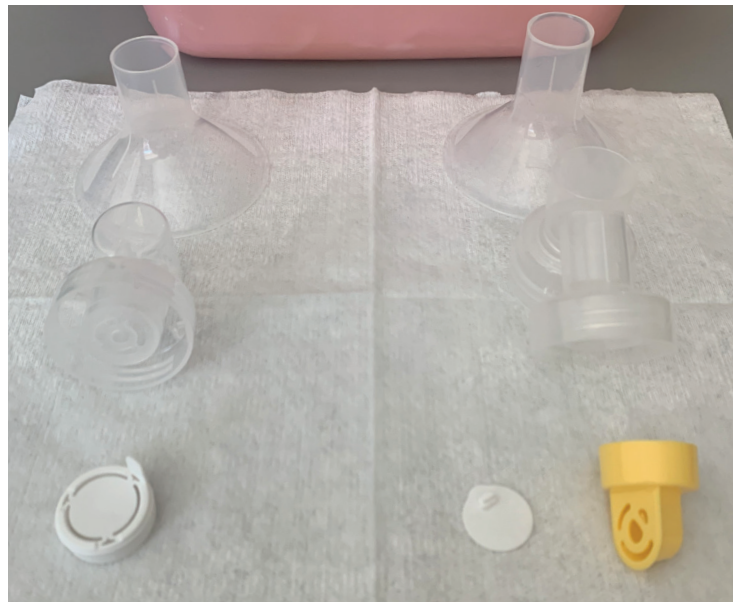
Step 4:

Place parts on a clean surface and/or towel.

Allow all parts to air dry.

Store dry parts in a clean, cool place when not in use. **DO NOT** store wet or damp parts in a bag or sealed container.

Store the clean pump kit at your baby's bedside until the next use.



References:

www.cdc.gov/healthywater/hygiene/healthychildcare/infantfeeding/breastpump.html

www.cdc.gov/healthywater/pdf/hygiene/breast-pump-fact-sheet.pdf